



SREE SIRI SAI TRADERS PRIVATE LIMITED



BUSINESS PROFILE

ADDRESS

7-1-619/a/35 Sudha Nilayam,
Gayathri Nagar colony,
Mythrivanam, Ameerpet,
Hyderabad. T.S - 500038.
web : www.sreesirisai.in

PHONE NO

040 - 48532389
+91 - 9885674358

EMAIL ID

rajkumar@sreesirisai.com
sreesirisailtd@gmail.com
info@sreesirisai.com

SREE SIRI SAI TRADERS PRIVATE LIMITED

The Company introduces itself as a bulk supplier of wide ranges of coals. We are pioneers when it comes to supplying of high-quality coal. We are engaged in catering to the diversified of various industries throughout South India, covering Cement Plants, Power Generation Plants & Steel Plants.

Our expertise is in sourcing of quality coal coupled with supply in a short time notice. We Sree Siri Sai Traders Private Limited (SSSTPL) believe in preserving environment by suggesting clients a clean Coal with LOW ASH, SULFUR and NITROGEN content, against others supplying Coal that produces pollution.

Our dedicated logistic team provides full range of support to clients as per their requirements.

Our MISSION is to fulfill our client's needs and demands, we -supply high quality mineral products at an economical & competitive price. We render our top standard services with a uniformity to all category of clients irrespective of value or volume of business they order.

Our 24x7 availability to clients is to deliver on time safe supply of our products. The company has set new paradigms of authenticity that is incomparable.



Coal fuelled the drive of the Industrial Revolution, bringing power to our lives in the form of electricity, transport and the present order of the world, as we now know it.

Sree Siri Sai traders Private Limited (SSSTPL) is a bulk supplier of a wide range of high quality coal products to the industrial sector in South India.

ABOUT US

Sree Siri Sai Traders Private Limited established in year 2012 by Mr Korimilli Raj Kumar Founder of the company, in a decade time company has grown to its heights in all verticals, by leaps and bounds in becoming a most reputed company in INDIA for supplying wide range of coal products.

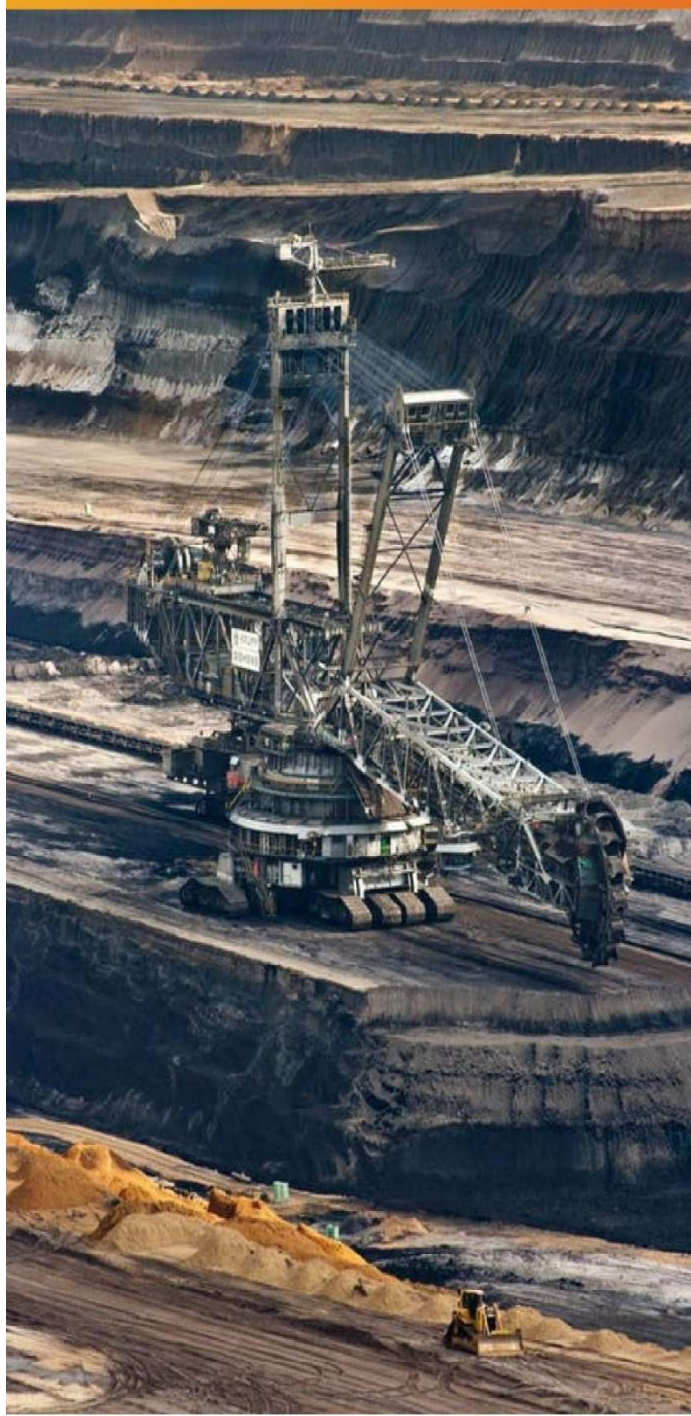
Driven by Mr Korimilli Raj Kumar's vision to protect and preserve environment with his innovative approach towards the quality clean coal.

We are not only pioneers but a leading importer of coal in India, constantly developing the business acumen to cater our changing customer's needs. Our strong rapport with our business partners like MINE OWNERS, PORT AUTHORITIES, INDIAN RAILWAYS & COAL INDIA LIMITED that enables to render a impeccable services to our clients.

We are now a leading STEVEDORES, CLEARING & FORWARDING AGENTS.

We are largest FLEET OWNERS in Port, we maintain all our equipment with a regular and periodic overhaul to ensure seamless smooth operations, all our operators are highly skilled with experiences delivering efficient operations.

We Sree Siri Sai Traders Private Limited are renowned coal trading company in SOUTH INDIA, we trade different types of coals like STEAM COAL, WASH COAL. We cater supply to diversified industries of POWER, CHEMICAL, CEMENT & STEEL through our wide distribution network spread across SOUTH INDIA, we source quality imported coal via direct and indirect connections to offer a competitive price.

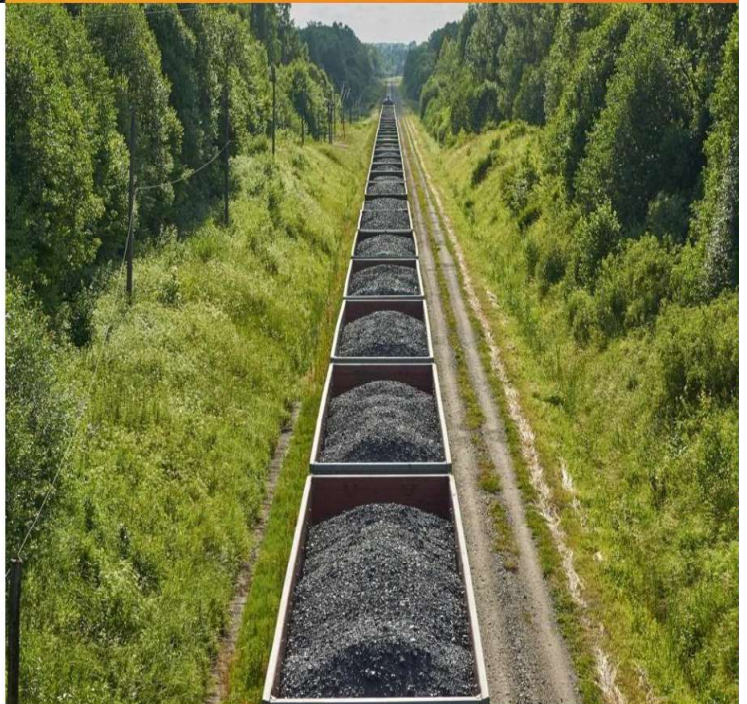




OUR VISION & MISSION

Our Vision

To become the largest indigenous coal trader in the country by 2025



Our Mission

Strive to increase capacities and capabilities.
We always keep customer as our primary focus.



OUR SCOPE OF WORK

01

IMPORTING STEAM COAL

Importing steam coal from Indonesia & South Africa to supply end users and traders in India.

02

PROCURING INDIAN COAL

We procure Indian coal from various mines in India to supply end users.

03

STEVEDORES AND BULK CARGO HANDLERS

We are a leading STEVEDORES, BULK CARGO HANDLERS in Visakhapatnam Port maintaining sound and good relations with Port Authorities, Indian Railways & Customs Authorities.



OUR MANAGEMENT TEAM

KORIMILLI RAJKUMAR

HEAD DIRECTOR

Mr Korimilli Rajkumar is a Graduate in Commerce, THE FOUNDER of the company with a long-term vision to grow the company to great heights under his leadership. His dream is to see the company reaches to top-level.

KORIMILLI SAMITHA

HEAD DIRECTOR

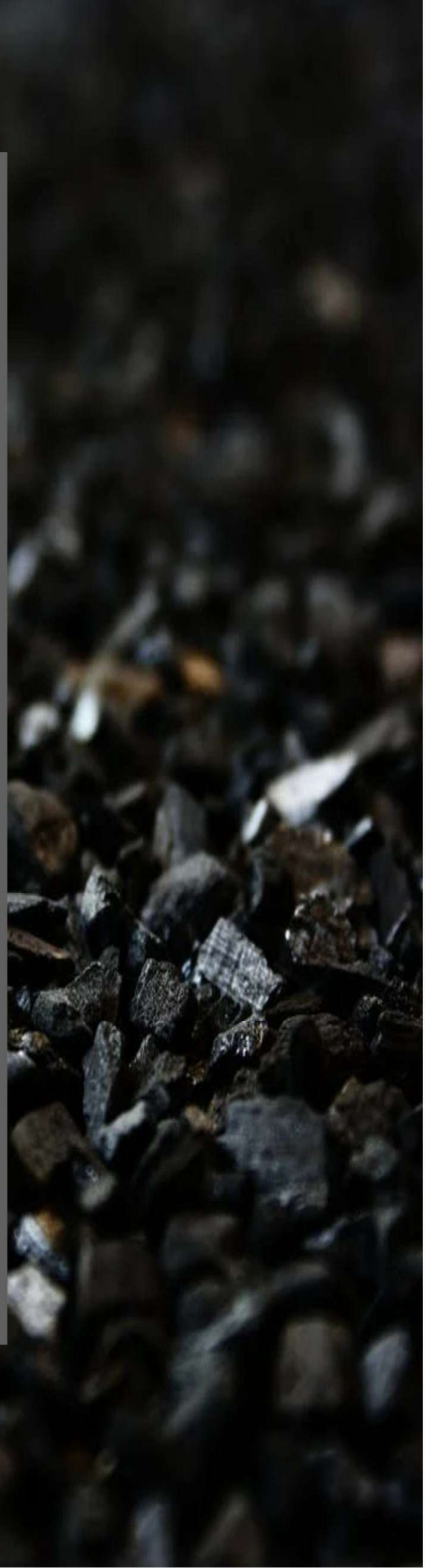
Mrs. Korimilli Samitha is graduate commerce and she is responsible for all domestic operations, due to her wide knowledge in the field of industries and had more than a decade experience in coal handling and coal operations.



WHY CHOOSE US ?

Over the years, we had a privilege of serving clients of various industries with long lasting bonds with a high-quality product and serving, our staff renders a comprehensive and relentless services 24x7 to meet clients demands.

Presently we are handling around 2MILLION Metric Tons serving to clients mentioned in this profile at the end of this brochure. We Identify mine remove over burden and go for exploration to yield the best coal with required quantities from most renowned shippers like HMS.



INDONESIAN COAL GRADES

SPECIFICATION	PARAMETERS
GCV (ARB)	6000 Kcal / Kg
TM (ARB)	12 - 15%
IM (ADB)	7 - 9%
ASH (ADB)	8 - 15%
SULPHUR (ADB)	Below 1%
VM (ADB)	38 - 43%
FC (ADB)	By Difference
HGI	38 - 43 Approx
SIZE (0 to 50 mm)	90% Approx

SPECIFICATIONS	PARAMETERS
GCV (ARB)	5800 Kcal / Kg
TM (ARB)	14 - 18%
IM (ADB)	8 - 10%
ASH (ADB)	8 - 14 %
SULPHUR (ADB)	Below 1%
VM (ADB)	38 - 43 %
FC (ADB)	By Difference
HGI	38 - 43 Approx
SIZE (0 to 50 mm)	90% Approx

SPECIFICATION	PARAMETERS
GCV (ARB)	5500 Kcal / Kg
TM (ARB)	15 - 20%
IM (ADB)	10 - 13%
ASH (ADB)	8 - 12%
SULPHUR (ADB)	Below 0.8%
VM (ADB)	38 - 43%
FC (ADB)	By Difference
HGI	40 - 50 Approx
SIZE (0 to 50 mm)	90% Approx

INDONESIAN COAL GRADES

SPECIFICATIONS	PARAMETERS
GCV (ARB)	5000 Kcal / Kg
TM (ARB)	24 - 26%
IM (ADB)	12 - 14%
ASH (ADB)	8 -10 %
SULPHUR (ADB)	Below 0.8%
VM (ADB)	38 - 43 %
FC (ADB)	By Difference
HGI	40 - 50 Approx
SIZE (0 to 50 mm)	90% Approx

SPECIFICATION	PARAMETERS
GCV (ARB)	4500 Kcal /Kg
TM (ARB)	28 - 32%
IM (ADB)	12 - 14%
ASH (ADB)	6 - 8%
SULPHUR (ADB)	Below 0.6%
VM (ADB)	38 - 42%
FC (ADB)	By Difference
HGI	50 Approx
SIZE (0 to 50 mm)	90% Approx

SPECIFICATIONS	PARAMETERS
GCV (ARB)	4200 Kcal /Kg
TM (ARB)	34 - 36%
IM (ADB)	13 - 15%
ASH (ADB)	6 - 8%
SULPHUR (ADB)	Below 0.6%
VM (ADB)	39 - 43%
FC (ADB)	By Difference
HGI	50 Approx
SIZE (0 to 50 mm)	90% Approx

INDONESIAN COAL GRADES

SPECIFICATION	PARAMETERS
GCV (ARB)	3800 Kcal /Kg
TM (ARB)	37 - 39%
IM (ADB)	13 - 15%
ASH (ADB)	6 - 8%
SULPHUR (ADB)	Below 0.5%
VM (ADB)	38 - 42%
FC (ADB)	By Difference
HGI	50 - 55 Approx
SIZE (0 to 50 mm)	90% Approx

SPECIFICATIONS	PARAMETERS
GCV (ARB)	3400 Kcal /Kg
TM (ARB)	42 - 44%
IM (ADB)	14 - 16%
ASH (ADB)	6 - 8%
SULPHUR (ADB)	Below 0.5%
VM (ADB)	38 - 42%
FC (ADB)	By Difference
HGI	55 Approx
SIZE (0 to 50 mm)	90% Approx

SOUTH AFRICAN COAL GRADES

RB1

SPECIFICATION	PARAMETERS
NCV (ARB)	6000 Kcal / Kg
TM (ARB)	6 - 8%
IM (ADB)	2 - 4%
ASH (ADB)	15 - 16%
SULPHUR (ADB)	Below 1%
VM (ADB)	27 - 30%
FC (ADB)	By Difference
HGI	50 - 60
SIZE (0 to 50 mm)	90%

RB2

SPECIFICATION	PARAMETERS
NCV (ARB)	5500 Kcal / Kg
TM (ARB)	8 - 9%
IM (ADB)	2 - 4%
ASH (ADB)	19 - 21%
SULPHUR (ADB)	Below 1%
VM (ADB)	25 - 28%
FC (ADB)	By Difference
HGI	50 - 60
SIZE (0 to 50 mm)	90%

RB3

SPECIFICATIONS	PARAMETERS
NCV (ARB)	4800 Kcal / Kg
TM (ARB)	7 - 9%
IM (ADB)	2 - 4%
ASH (ADB)	25 - 27%
SULPHUR (ADB)	Below 1%
VM (ADB)	23 - 25%
FC (ADB)	By Difference
HGI	45 - 70
SIZE (0 to 50 mm)	90%

U.S COAL GRADES

SPECIFICATION	PARAMETERS
GCV (ARB)	7200 Kcal/ Kg
TM (ARB)	8%
IM (ADB)	1.40%
ASH (ADB)	9%
SULPHUR (ADB)	3%
VM (ADB)	38 - 40%
FC (ADB)	By Difference
SIZE (0 to 50 mm)	90% Approx

SPECIFICATIONS	PARAMETERS
GCV (ARB)	6800 Kcal/ Kg
TM (ARB)	8%
IM (ADB)	1%
ASH (ADB)	9%
SULPHUR (ADB)	Below 1%
VM (ADB)	33 - 38%
FC (ADB)	By Difference
SIZE (0 to 50 mm)	90% Approx

AUSTRALIAN COAL GRADES

SPECIFICATION	PARAMETERS
NCV (ARB)	6000 Kcal/ Kg
TM (ARB)	11 - 15%
IM (ADB)	1 - 3%
ASH (ADB)	9 - 11%
SULPHUR (ADB)	Below 0.6%
VM (ADB)	30 - 37%
FC (ADB)	By Difference
HGI	45 - 70
SIZE (0 to 50 mm)	90% Approx

SPECIFICATION	PARAMETERS
NCV (ARB)	6000 Kcal/ Kg
TM (ARB)	12 - 15%
IM (ADB)	2 - 4%
ASH (ADB)	12 - 15%
SULPHUR (ADB)	Below 0.8%
VM (ADB)	24 - 35%
FC (ADB)	By Difference
HGI	45 - 70
SIZE (0 to 50 mm)	90% Approx

RUSSIAN COAL GRADES

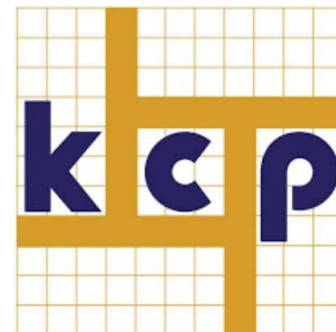
SPECIFICATION	PARAMETERS
NCV (ARB)	5900 Kcal/ Kg
TM (ARB)	10 - 12%
IM (ADB)	3 - 4%
ASH (ADB)	9 - 11%
SULPHUR (ADB)	Below 0.6%
VM (ADB)	26 - 28%
FC (ADB)	By Difference
HGI	45
SIZE (0 to 50 mm)	90% Approx

SPECIFICATION	PARAMETERS
NCV (ARB)	6200 Kcal/ Kg
TM (ARB)	8 - 11%
IM (ADB)	2 - 4%
ASH (ADB)	12 - 15%
SULPHUR (ADB)	Below 0.8%
VM (ADB)	24 - 35%
FC (ADB)	By Difference
HGI	45
SIZE (0 to 50 mm)	90% Approx

OUR CLIENTS



RAIN INDUSTRIES LIMITED



OUR CLIENTS



JAIPUR CEMENTS PRIVATE LTD



HEIDELBERGCEMENT

ANDHRA ORGANICS LIMITED



OUR CLIENTS



Sri Sarvaraya Sugars Limited

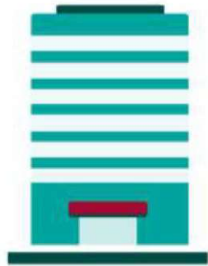


SHRI GIRIJA ALLOY & POWER PVT LTD



TIANISH LABORATORIES





CORPORATE OFFICE
HYDERABAD

7-1-619/a/35 Sudha Nilayam,
Gayathri Nagar colony,
Mythrivanam, Ameerpet,
Hyderabad. T.S - 500 038.

BRANCH OFFICE
KAKINADA

16-16-33, Ragati Vari Street,
Dhumulapeta
Kakinada, East Godavari,
Andhra Pradesh - 533 001

VISAKHAPATNAM

FH. No: 11-9-651, Plot No:90
Daspalla Hills,
Road No 1c,
Visakhapatnam 530 003.
Ph No : 9985329890

